



# ladleView

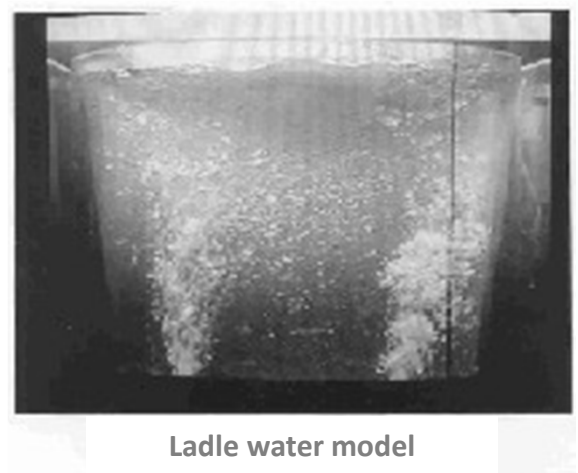
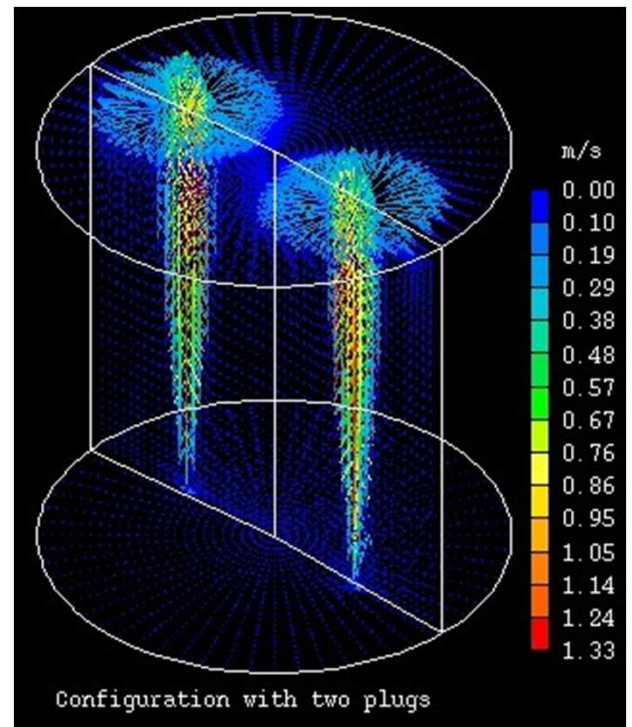
## Problem:

During secondary refining treatment, ladle Ar station is not only parking plant, but directly contributes to the final quality of cast products. If argon plugs and bubbling are not fully optimised, inclusions can increase and be kept on inside the steel.

## Solution:

ladleView is a service CSM offers to its Customers in order to optimise the operative practices of secondary metallurgy.

ladleView can assist steelshop managers and technicians to design Argon bubbling operations, including number and position of plugs. This is made thanks to computerised fluid dynamic models coupled with reduced scale physical water models plus internal knowledge.

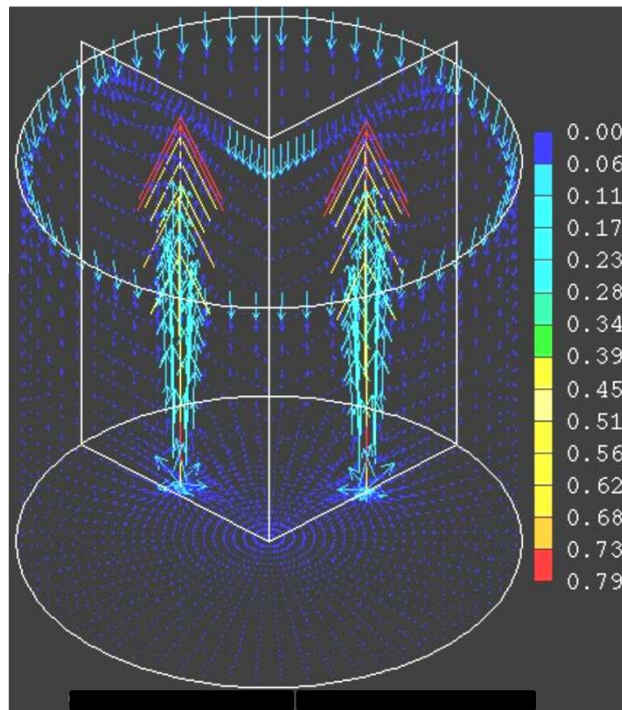
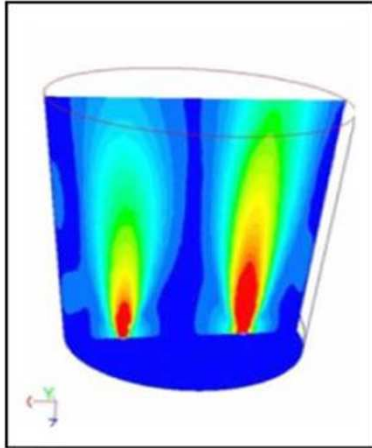


## Benefits:

- Decreasing of specific Argon consumption
- Increasing of inclusion removal
  - Improvement of internal quality of cast products
  - Optimisation of operative practices

## Data request:

Internal geometry of the ladle.  
Number and position of stirring plugs.  
Spot steel temperature measures.



- Inclusion minimisation with ladleView directly impact on optimisation of the following tundish operations.
- ladleView and tundishView services can maximise inclusion removal.
- The comprehension of ladle behaviour helps in designing very tuned refining processes.

contact:  
Centro Sviluppo Materiali SpA  
[www.c-s-m.it](http://www.c-s-m.it)  
[marketing.steel@c-s-m.it](mailto:marketing.steel@c-s-m.it)