



International Workshop

***"Stainless Steel in Ground Transport Vehicles Research Lines for
the Next Years"***

Rome, 28th November 2008

CSM – Centro Sviluppo Materiali S.p.A.

In cooperation with:

RFCS Project INSAPTRANS





Aim of the Workshop

The development of new carbon steel grades and the use of aluminium could reduce the stainless market in the bus and train field. It is important for stainless steel producers to give to the market a complete answer to this problem. In order to re-gain market share it is necessary to address the research for the next 3 years.

From cost reduction up to characteristics improvements, all the research directions must be investigated.

The goal of the present workshop is to define next research strategies in this field.





Programme

- 09:00** **Registration & coffee**
- 09:45** **Welcome and Introduction to the Workshop, Dr. Leopoldo Rizzo – CSM**
- 09:50** **Stainless Steel Handbook presentation, Dr. Mika Siren - VTT**
- 10:00** **Keynote 1: Stainless steel in passenger transport , Dr. Thomas Pauly – Euro Inox**
- 10:25** **Round Table 1**
- 11:00** **Keynote 2: Materials development and selection, Dr. Benoit Van Hecke – Arcelormittal**
- 11:25** **Round Table 2**
- 12:00** **Lunch**
- 13:30** **Keynote 3: Stainless Steel Structures, Dr. Tero Taulavuori - Outokumpu**
- 14:00** **Round Table 3**
- 14:30** **Coffee Break**
- 14:45** **Final discussion and general remarks - Dr. Tero Taulavuori - Outokumpu**
- 15:30** **Closing of the Work shop**

TOPICS covered: *Technical criteria of material selection: What does the fabricator want? Customer expectations: What does the operator want? Ferritics – Austenitics – Duplex grades: where to use what? High-strength steels – the stainless solution; Design innovations: sandwich panels and hydroformed nodes; Forming and joining: specific assets of stainless steels; The economics of material selection: how important is Life Cycle Costing? Maintenance and repair: what are the priority issues? Research and development: Where is more information needed?*



International Workshop:
**"Stainless Steel in Ground Transport Vehicles Research Lines for the Next
Years"**
Rome, 28 November 2008
CSM – Centro Sviluppo Materiali S.p.A.



**Centro Sviluppo
Materiali S.p.A.**



Workshop Venue

The Workshop will be held in Rome at CSM – Centro Sviluppo Materiali S.p.A., located in Via di Castel Romano 100 – 00128 Rome.

A few words about Rome...

Rome, well known as a thousand years old city, doesn't require a presentation! Just it may be remembered it is the Holy See of the Papacy and focal point for artists all around the world from Renaissance on, open laboratory for "full scale" experimentation during baroque and, finally, capital of Italy after 1870. Every culture left here unique imprints you can pick up and choose and fix in your mind or camera then melt with the toppest offer of the today living city of culture (museuns, world level exhibitions, music) and warm welcome by roman people.

CENTRO SVILUPPO MATERIALI S.p.A.
CENTRO SVILUPPO MATERIALI S.p.A.



Logistical Information

HOTEL ACCOMODATION

Please make your hotel reservation at your earliest convenience considering that no official agency is operating. An indication of Hotels, among the citycenter and Eur zone, is listened aside. While booking the Hotel take into account that the meeting point of the Shuttle bus service provided by the workshop organization is in EUR zone (suburb of Rome and business zone). A wider list of Hotels in Rome is also available on www.romaclick.it website.

HOTELS EUR Zone	Single BB	Double use BB
HOTEL SHERATON **** Via del Pattinaggio, 100 Tel. +36-06-54531 www.sheraton.com/roma	Eur 220	Eur 240
HOTEL DEI CONGRESSI**** Viale Shakespeare, 29 Tel. +39-06-5926021 www.hoteldeicongressiroma.com	Eur 140	Eur 155
VILLA EUR PARCO DEI PINI *** P.zz.le Marcellino Champagnat, 2 Tel. +39-06-54220627 www.villaeur.com	Eur 80	Eur 93
HOTEL AMERICAN PALACE**** Via Laurentina, 554 Tel. 39-06-5913552 www.gruppoloan.it/american_palace/american	Eur 120	Eur 140
HOTELS CITYCENTER		
HOTEL MERCURE DELTA COLOSSEO **** Via Labicana, 144 Tel.+39-06-7001874 www.accorhotels.com	Eur 133	Eur 166
HOTEL UNIVERSO *** Via Principe Amedeo 5/b Tel. +39-06-476811 www.bestwestern.it	Eur 132	Eur 148
HOTEL PRESIDENT *** Via Emanuele Filiberto, 173 Tel +39-06-770121 www.bestwestern.it	Eur 118	Eur 129

CONSIDER THAT INDICATED RATES ARE
 SUBJECTED TO SPECIFIC VARIATIONS
 ACCORDING TO THE HOTEL MARKETING
 POLICY





PUBLIC TRANSPORT

The meeting point for the Workshop Shuttle Bus Service is easily reachable from the citycenter by underground. As a matter of fact Rome is served both by bus and underground services - *consultable through the websites www.metroroma.it (underground service), www.atac.roma.it (bus service) - and by taxi too (suggested taxi number: +39-06-4157, +39-06-3570, +39-06-6645).*



SHUTTLE BUS SERVICE

A Bus transfer from the nearest underground station EUR Palasport (M3 station of Line B) to CSM and vice-versa (15 min travelling) will be provided in the morning and at the end of the Workshop, in the afternoon, and to the Airport too. The Shuttle Bus meeting point is upstairs the underground station **EUR Palasport**, in Viale America, just in front of BELVEDERE Bar (departure from EUR Palasport-meeting point see the map). The bus will have a "CSM" plate on the front window.



Shuttle Bus Service Meeting-Point Map

Timetable Shuttle Bus Service for Workshop Location – 28/11/2008

- From Eur Palasport to Workshop Location: a) 07:40 a.m. b) 08:55 a.m.
- From Workshop Location to Eur Palasport : a) 16:55 p.m. b) 18:10 p.m.
- From Workshop Location to Fiumicino Airport : 16:15 p.m.

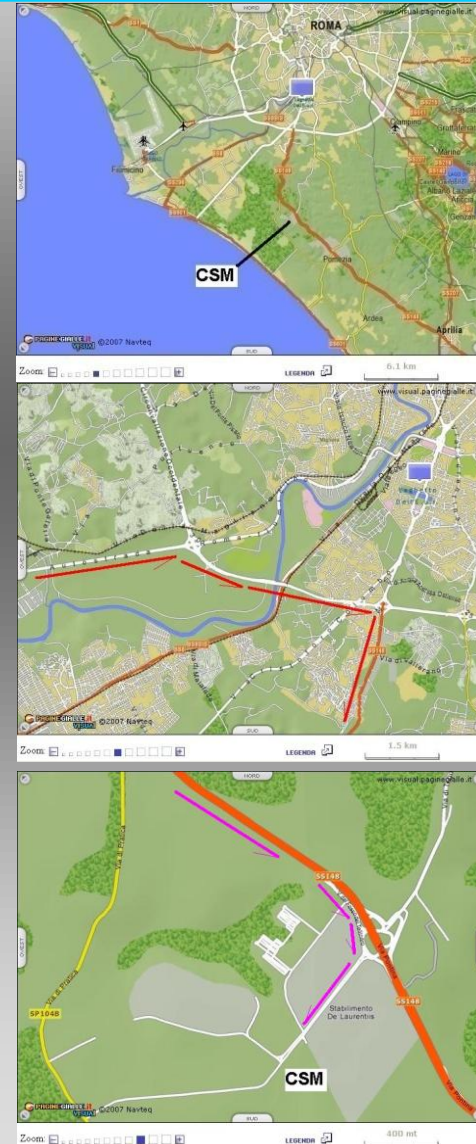


HOW TO REACH the Workshop Location (CSM) by Car:

CSM is located along the Pontina road, in the South of Rome, Pomezia direction.

From the GRA (Grande Raccordo Anulare) you are suggested to take the Pontina road to Pomezia direction till the **"Castel Romano/Zona industriale"** exit (about 15 km from the GRA, considering that it comes after the "Pratica di Mare" exit).

Then follow the main road and the signs; drive living the "URMET" company on your right until you reach CSM on your left. Cross the tree-lined boulevard and there you are.





International Workshop:
**"Stainless Steel in Ground Transport Vehicles Research Lines for the Next
Years"**
Rome, 28 November 2008
CSM – Centro Sviluppo Materiali S.p.A.



**Centro Sviluppo
Materiali S.p.A.**

REGISTRATION FORM

NAME _____

SURNAME _____

COMPANY _____

ADDRESS _____

PHONE _____

FAX _____

E-MAIL _____

**To be filled and sent to Mrs. Giorgia Camilla GELATI, by Fax: +39-06-5055452, by e-mail: g.gelati@c-s-m.it
or on line through the website www.c-s-m.it*

NO LATER THAN 23rd November 2008



International Workshop:
**"Stainless Steel in Ground Transport Vehicles Research Lines for the Next
Years"**
Rome, 28 November 2008
CSM – Centro Sviluppo Materiali S.p.A.



**Centro Sviluppo
Materiali S.p.A.**



Contacts:

Scientific Committee:

Dr. Leopoldo RIZZO, Moderator of the Workshop – Centro Sviluppo Materiali S.p.A.

Phone: +39-06-5055292

Organising Secretariat:

Mrs. Giorgia Camilla GELATI

Phone: +39-06-5055205, Fax.: +39-06-5055452, e-mail: g.gelati@c-s-m.it, website: www.c-s-m.it